

Renico Plant Hire had a very busy winter season. The shorter days we experienced during the winter months meant that we got less done than usual, but despite this, the drier days have none the less enabled our Earthworks and Civils division to perform well.

Three Units with Dedicated Management Teams

Plant Hire

We have seen a decline in the demand for smaller plant like TLB's and small rollers due to the decrease in average building activity. With the economic slowdown it is evident that plant hire in general is under pressure and there is definitely a decrease in the demand for equipment from both large and small builders.

However, on the infrastructure development side we have seen an encouraging demand, with various larger scale projects taking place in our immediate area. Renico Plant Hire supplied three excavators to ESOR for use on the new Bergbron water line being installed by Rand Water. Rand Water has been installing large steel water pipes from Bergbron all the way past Honeydew to Cosmo City. We believe these will form part of a larger project where new and larger water pipes are brought all the way from the Vaal River.



Our Excavator hard at work on the Bergbron Water Pipe Line Installation.

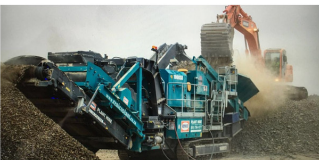
Renico Plant Hire has taken delivery of 6 new Sumitomo excavators from ELB Equipment. Two of the new 30 ton Excavators are fitted with a quick detach coupling and 30 ton Furukawa FXJ375 Hammers. A new FXJ275 Furukawa hammer was also bought to replace a worn out hammer on one of our 21 ton Sumitomo Excavators. In total three 30 ton Sumitomo and three 21 ton Sumitomo excavators have been purchased.



New Sumitomo 30 ton Excavators – one with a Furakawa hammer attachment.

Quarrying & Crushing

Having secured a large high volume crushing job in the Northern Cape, Renico Quarrying & Crushing purchased a new 1000 SR Cone crusher from ELB Equipment, which was immediately put into operation when it reached the site.



The new 1000SR Cone Crusher already proving it's worth.

Renico Plant Hire also changed brand and along with the excavators bought 2 Kawasaki 80Z5 Front End Loaders from ELB Equipment, which were then transported to work alongside the Cone Crusher on this Northern Cape job.



One of the new Kawasaki Front End Loaders operating in the Northern Cape.

Earthworks & Civils

Renico Earthworks & Civils have had an extremely busy winter period. Not only have they secured several new projects, but, amongst other work, they have also been completing the parking lot and access road for the Mall of Siya in Siyabuswa near Marble Hall; are busy constructing parking platforms at the site of the new Bambanani Shopping Centre in Diepsloot; have undertaken the partial demolition of buildings at the Hobart Centre and are establishing new walkways and a ramp there; have been site clearing, levelling and excavating at the site designated for Roots Butchery at Lanseria and have established new platforms for a 22,000m² Warehouse to be built in Kya Sand!

All this activity has resulted in job opportunities for more site foremen and offered temporary employment for the duration of the several contracts being undertaken in Diepsloot, Mamelodi and Siyabuswa as well as opportunities for smaller contractors with suitable equipment who operate from these areas.



Bambanani Shopping Mall Earthworks taking shape.



Renico excavators at work in Lanseria.



The new ramp and walkway at Hobart Centre.



Access Roads nearing completion at the Mall of Siya.

Recently Renico Earthworks & Civils secured the site clearing, and bulk earthworks for the new Curro Wilgeheuwel School that is being established on the site adjacent to our Royal View complex currently under construction. Renico is also attending to the site clearing at Curro Clayville.



Site cleared and earthworks in progress for the new Curro Wilgeheuwel School.

Stay Informed!

Visit our website for news of new equipment and projects we're working on, to see the range of equipment we have for hire or to keep up to date with any other new developments in the industry - or follow us on Twitter or Facebook [we REALLY keep you in the picture on our timeline there!]

www.renicoplant.co.za



Regards

Nico Louw

RENICO Plant Hire (Pty) Ltd

(011) 794 1177 planthire@renicoplant.co.za